

# CAN GATEWAY

Device for data exchange between CAN networks

# CANGATEWAY

## CAN interface for data exchange

*CANGateway interfaces with the CAN bus network of the vehicle and ensures direct and secure communications between the machine and the device.*



### Data exchange without connection

It connects networks and isolates them, without making an electrical connection.



### Remote control

It obtains remote control of numerous fleet functions.



### Immediate command sending

It allows safety aid sensors to send commands directly to the vehicle network.



### Safe installation

It maintains the machine's characteristics.



### Real-time monitoring

It monitors exact diagnostic information in real time.



### High versatility

It is suitable for every type of machine in every industry.

## Technical specifications

Dimensions	104x43x21 mm
Weight	50 g
Power supply	4,5- 24 V

Material	ABS fireproofed
Power draw	100 mA
Interface	Can, USB, RS232

# Communications direct and safe between device and machine

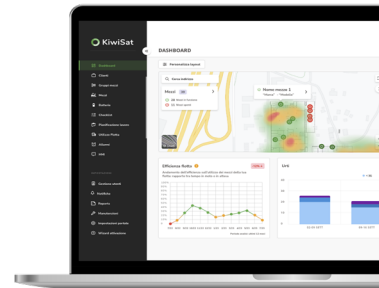
CANGateway enables the **exchange of data between networks** by electrically isolating them.

The **absence of an electrical connection** between the Kiwitron network and that of the vehicle allows a **full protection** of the machine and makes possible communication between **different protocols**.



## Everything in the cloud

CANGateway allows you to read machine data and transfer the various operating parameters to KeyTouch or KeyAdv and the **Kiwisat cloud** via the most common protocols, such as CAN Open and J1939.





 Via Vizzano 44, Sasso Marconi (BO)

 [www.kiwitron.it](http://www.kiwitron.it)

 + 39 05118893470

 [info@kiwitron.it](mailto:info@kiwitron.it)

The brochure contains summary information that does not constitute a contractual commitment.