

CAN GATEWAY

Device for data exchange between CAN networks



Kiwitron

SMART INDUSTRY SOLUTIONS

CANGATEWAY

CAN interface for data exchange

CANGateway interfaces with the CAN bus network of the vehicle and ensures direct and secure communications between the machine and the device.



Data exchange without connection

It connects networks and isolates them, without making an electrical connection.



Remote control

It obtains remote control of numerous fleet functions.



Immediate command sending

It allows safety aid sensors to send commands directly to the vehicle network.



Safe installation

It maintains the machine's characteristics.



Real-time monitoring

It monitors exact diagnostic information in real time.



High versatility

It is suitable for every type of machine in every industry.

Technical specifications

Dimensions	104x43x21 mm
Weight	50 g
Power supply	4,5- 24 V

Material	ABS fireproofed
Power draw	100 mA
Interface	Can, USB, RS232

Communications direct and safe between device and machine

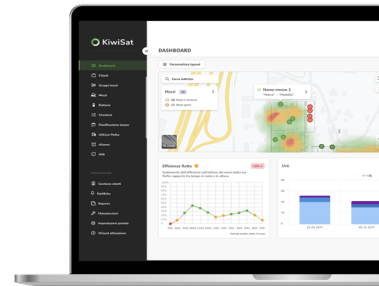
CANGateway enables the **exchange of data between networks** by electrically isolating them.

The **absence of an electrical connection** between the Kiwitron network and that of the vehicle allows a **full protection** of the machine and makes possible communication between **different protocols**.



Everything in the cloud

CANGateway allows you to read machine data and transfer the various operating parameters to *ETS Touch* or *Adv* and the *Kiwisat cloud* via the most common protocols, such as CAN Open and J1939.





 Via Vizzano 44, Sasso Marconi (BO)

 www.kiwitron.it

 + 39 05118893470

 info@kiwitron.it

The brochure contains summary information that does not constitute a contractual commitment.